



EST.1948

**MOORLANDS  
COLLEGE**

# CHART YOUR COURSE

**FIELD GUIDE TO IMPACTING  
THE CHURCH AND WORLD**



RHYTHM

L.A. 2019 & 2020

NIKE





## Moorlands College

- 5** [Welcome from our Principal](#)
- 6** [Life at Moorlands](#)
- 8** [Vibrant Community](#)
- 10** [Support and Wellbeing](#)
- 11** [Learning Assistance](#)
- 12** [Is Studying Theology Right for You?](#)

## Locations of Study

- 16** [Christchurch Campus](#)
- 18** [South West Campus](#)
- 20** [Flexible Learning](#)

## Undergraduate Programmes

- 26** [Foundation Year](#)
- 28** [BA \(Hons\) Applied Theology](#)
- 30** [BA \(Hons\) Applied Theology \(Youth and Community Work\)](#)

## Postgraduate Programmes

- 34** [MA Applied Theology](#)
- 36** [MA Language, Community and Development](#)

## Extra Information

- 39** [International Applications](#)
- 40** [Entry Requirements](#)
- 41** [Fees and Finance](#)
- 43** [Applying](#)





**You are  
made for more**

**I'm writing this welcome on the day of our Graduation, when dozens of people just like you will be recognised for their achievements.**

For each one there is a story of perseverance and growth. We celebrate the person who leaves with distinction as much as we do the person who scrapes through having given everything they have got. But don't miss this point: If you graduate with a first-class degree but a third-rate character, we have failed you.

Our approach is holistic and transformative yet rooted in our Evangelical tradition. We want to invest in you as a follower of Jesus and provide you with the tools you need for the long haul. Our staff team are brilliant, and it's their passion for Christ and desire to pass on the baton that marks them out, knowing that this stuff is as much caught as taught.

75 years ago, Moorlands was founded to equip people to send them out to impact the Church and world. Nothing has changed. If anything, the need is more urgent than ever.

We are praying for you as you seek to understand God's call on your life. Find out about how you can take that next step with us by exploring this prospectus, following our socials, and getting to an Open Day. We would love to get to know you!



**Andy du Feu**  
**Principal**



# Why Moorlands?

**Do you want to go deeper into the Bible?  
Are you looking to grow practically  
and apply your theology?**



At Moorlands College, we're 100% committed to the Bible. With us, you'll receive solid, theological teaching in a way that best suits your circumstances.



Knowing that God calls every student to a unique ministry, we offer different modes and locations of study to help provide you with the best possible learning environment.







Moorlands College is not a church but the worship of God is the beat of our heart. If you are Campus Based you will gather weekly with staff for worship, prayer and teaching. There are off-timetable days which provide space for prayer and reflection, and students often do their own thing organising prayer and worship nights.

Those studying via Flexible Learning can be assured that we are praying for you too. You will also be placed in smaller discipleship groups which will provide the opportunity to meet weekly online and pray together, and during residentials there are scheduled times for prayer and worship.

As a student at Moorlands South West, you will gather weekly in local clusters for prayer, worship and encouragement, and join with the wider SWYM (South West Youth Ministries) community for six, 4-day residentials with rhythms of worship, inspiring teaching and fun activities.

As a college, we're committed to investing in your spiritual growth, no matter what programme you are on, and commit to praying for you once you finish your time here.



### **TEF 2023 Silver Award**

We've been awarded the TEF Silver award for our undergraduate courses.

"The student experience and student outcomes are typically very high quality."



# Vibrant Community

Whenever we ask past and present students to describe Moorlands, there's one word that people always come back to.

Community.

We are a safe space for you to grapple with the truth of Scripture and the challenges of faith. We are a vibrant community of people who share faith and friendship.

You might turn up on day one and wonder how you are going to fit in. Some of those around you will be thinking exactly the same thing. Yet it's more than likely that you will leave with life-long friendships and a new family. Whether for six months on the PG Certificate or the four-year variant of the degree, we journey together through the highs and lows from a place of prayer and fellowship. People leave here with tangible memories that are very slow to fade.



# Above and beyond student satisfaction

We consistently rank higher than the OfS benchmark in the National Student Survey. Our students love Moorlands College, and you will too.



# 96%

**Course Teaching**

*OfS benchmark 91%*



# 95%

**Learning opportunities**

*OfS benchmark 85%*



# 93%

**Academic support**

*OfS benchmark 89%*



# 92%

**Assessment and feedback**

*OfS benchmark 83%*

Based on the 2023 edition of the National Student Survey (NSS).  
The benchmark is set by the Office for Students (OfS).

# Support and Well-being



We want to ensure that you are valued, encouraged and supported throughout your time studying with us. You will be assigned a personal tutor, who will be your primary point of contact and who will support you with both academic and pastoral issues.

## Foundation Year / Moorlands Campus Based

You'll be in a discipleship group with peers from all years, giving you a diverse, prayerful, support network during your studies. You'll meet regularly during term time, and it's not uncommon to end up at the beach, boating on the River Avon, playing volleyball, or just having a coffee together!

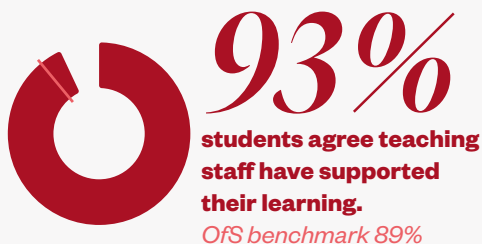
## Flexible Degree

While your focus is more on your placement church / organisation, our staff ensure you're supported as much as possible during your

studies. As a Flexible Learner you will have a designated tutor who will provide you with support, and you will also be part of a small group meeting on a video call each week.

## Moorlands South West

A tutor will be assigned to you and will be in regular contact to see how you're getting on. During study blocks, you'll regularly be in contact with others from your year, and virtual tutorials are also available to help your academic and personal growth away from the lecture room.



*“There is a lot of support available for all your needs, and you should make the most of those opportunities early on.*

*Don't be afraid to ask questions and start conversations with someone you don't know, as most people are more than happy and are very friendly.”*

**Paul**

# Learning Assistance



We are committed to being a community where equality of opportunity is a reality for all.

When you come to study with us, we want you to be able to fulfil your potential, as a self-motivated, independent, lifelong learner, and we offer a range of support to help you achieve this.

Our supportive learning environment is evident in the services we provide through our Learning Assistance team. This specialist support is available to all our students, and can be provided if you have:

- Specific learning differences
- Physical/sensory impairments
- Medical conditions
- Mental health issues
- Temporary injuries

We provide guidance on getting a diagnosis, applying for Disability Students Allowance (DSA) and creating a personalised Learning Assistance Plan to ensure you are not disadvantaged and have every opportunity to perform to your best.



Moorlands College is registered as a **Disabled Students Allowance Non-Medical Help Provider** and can offer the following DSA services:

1. Specialist Study Skills support for students diagnosed with dyslexia or other learning differences
2. Specialist Study Skills support for students with an Autism Spectrum diagnosis
3. Mentoring support for students with a diagnosed mental health condition or Autism Spectrum Condition

## Supplementary Study Skills Support

We offer sessions to support you in improving your academic writing, helping you understand the assignment feedback and teach you strategies for improving your work. We have bespoke packages for students who have **English as an Additional Language (EAL)** and students who have had a break from academic studies before they come to Moorlands and would like to refresh their academic skills.

We would love to speak to you about the support on offer at Moorlands, so please do get in touch by phone or email and ask for the Learning Assistance team.

 01425 674500

 [learningassistance@moorlands.ac.uk](mailto:learningassistance@moorlands.ac.uk)

1.



3.



4.



2.



5.



# Is Studying Theology Right For You?

## Moorlands Checklist

### 1. Seeking to impact the world?

We have graduates across the UK and around the world, serving people in churches, Christian organisations and projects. You are equipped to bring light into darkness, peace into chaos, and restoration into brokenness, partnering with God wherever He takes you.

### 2. Yearning for a deeper knowledge of Christ and His Word?

We have a high view of Scripture and know many people study with us because of a hunger for God's Word. Moorlands offers you a unique space for you to grow in your relationship with Christ, deepening your understanding of Scripture and discovering its transformative power.

### 3. Looking to be invested in spiritually, practically and academically?

We don't only look to inform minds, but we also seek to transform hearts. Our approach to discipleship and formation is wholistic, reflecting the command to love the Lord your God with your heart, mind, soul and strength.

### 4. Desiring an opportunity to develop in your current context?

Whether you are just starting out or are already embedded in a ministry context, Moorlands offers programmes with a variety of modes to suit you. There are study options either full-time or part-time, on campus, in the South West or flexibly from your current location.

### 5. Looking to step into God's calling for your life?

Moorlands is never a final destination, but it can play a significant part in both discerning your calling and preparing for it! With core belief in applying what you learn and the leading of the Holy Spirit, you will have opportunities to test the sense of vocational call – or discover passions that you did not know you had!



# Locations of Study

## Undergraduate locations

You have the choice of whether to study Campus Based in Christchurch, Dorset, Moorlands South West at Lee Abbey, North Devon, or anywhere in the UK or Ireland via Flexible Learning. Each mode of study has different benefits, giving you flexibility to choose which best suits your circumstances. Regardless of mode of study, you will receive the same course content and academic excellence.

## Postgraduate locations

Both programmes are delivered at our Christchurch campus, with our MA Language, Community and Development essentially campus based, and the MA Applied Theology via short residentials, and the rest at your own pace whether in the UK or beyond.



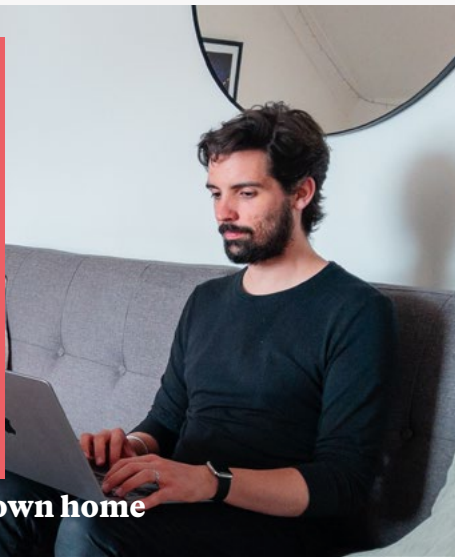




**Study remotely from wherever you are in the UK with Flexible Learning.**

Stay immersed in your church or organisation, whilst gaining access to amazing personal support and online lectures.

**Learn more about Flexible Learning on page 20**



**Study from the comfort of your own home**



**The stunning beaches of Bournemouth and Christchurch**



**The rugged North Devon coast**



# Christchurch Campus

Our main campus, set on the beautiful Dorset south coast, is less than 10 minutes from the beach and 7 minutes from the airport.

If you are looking for a fully immersive “Bible college” experience, then this is the option for you. With the option to either live on site, or live locally and travel in each day, students are taught and mentored by our experienced staff. Teaching is spread across the week, allowing you a slower pace to gain

a broader knowledge of the Bible whilst developing practical ministry skills.

This option is unique as you get to experience full-time study whilst living and learning within a dedicated Christian community.

## **At Moorlands Christchurch Campus, you can study:**

- Foundation Year
- BA (Hons) Applied Theology
- BA (Hons) Applied Theology (Youth and Community Work)
- MA Applied Theology
- MA Language, Community and Development



*“One of the most important things about Moorlands College is the way the college embraces you. You are welcomed the way you are, regardless of your age, your culture, or the way you believe. Moorlands College is a family and you are accepted as a member of this big family.”*

*Osimar*



# South West Campus

Moorlands South West, in partnership with South West Youth Ministries (SWYM), is based at Lee Abbey on the North Devon coast.

Your time here will be made up of six, 4-day residentials where you will study 2 modules, with rhythms of worship, inspiring teaching and wider activities. The remaining 2 modules will be delivered via the flexible learning mode of delivery.

Each week you will complete 6 - 12 hours in your placement setting, as well as the hours SWYM require.

Studying at Moorlands South West enables you to give more time to serve in your chosen context, and embeds you in the wider SWYM network with all of their benefits.

**In partnership with:**



## **At Moorlands South West, you can study:**

- BA (Hons) Applied Theology
- BA (Hons) Applied Theology (Youth and Community Work)



*"The best thing about studying with Moorlands is that our learning contributes to our lives and ministry. The knowledge we gain is not stuck in our heads - it gets lived out in our churches, villages and communities. We do not undertake this learning alone. We are embedded in a rich community of faith, surrounded by supportive tutors and other like-minded students."*

*Chloe*

2024 marked the 10th anniversary of partnering with South West Youth Ministries. We have seen over 100 people trained and equipped through the undergraduate programmes delivered there, and have a fantastic team who make it a vibrant place to study.



# Flexible Learning

Study whilst serving - wherever you are.

Study from wherever you are in the UK, whilst immersing yourself in your chosen context (church, charity or Christian organisation). This might be your paid employment, where you volunteer, or the church to which you belong. Alongside being immersed in your placement, you'll also have access to regular group sessions as well as a personal tutor for dedicated one-to-one support.



## **With Flexible Learning, you can study:**

- BA (Hons) Applied Theology
- BA (Hons) Applied Theology (Youth and Community Work)

# MODULE BREAKDOWN



## Online lectures

$\frac{1}{4}$  of each module will be accessed via live, online lectures. These sessions provide you with opportunities to take part in group discussions and interactive assignments.



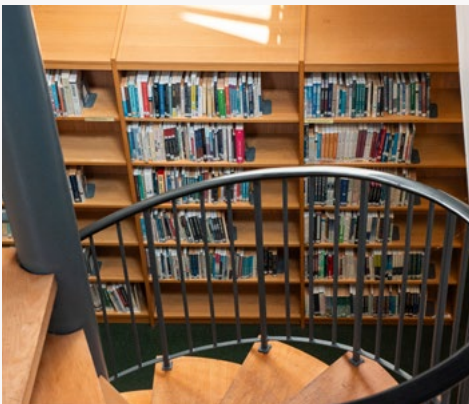
## Independent study

$\frac{1}{2}$  of each module will be completed at your own pace, from wherever you are. You'll also have the opportunity to do your own independent study, reading, and research.



## Residential lectures

$\frac{1}{4}$  of your teaching and learning activities will be delivered in person. Each year you'll attend three residentials at our Christchurch campus – a 4-night residential including induction, followed by two further 2-night residentials.









# Made to impact the

## Undergraduate Programmes



### **Foundation Year**

**Page 26**

If you've been out of education for some time or don't quite have the qualifications, this is the course for you.



### **BA (Hons) Applied Theology**

**Page 28**

Diploma of Higher Education  
in Applied Theology

Certificate of Higher Education  
in Applied Theology

Be equipped to serve God in practical and relevant ways in a fast-changing, complex world whether through the church or beyond.



### **BA (Hons) Applied Theology** **Youth and Community Work**

**Page 30**

Diploma of Higher Education  
Applied Theology (Youth Studies)

Be equipped to serve God by serving young people in practical and relevant ways in dynamic contexts.

# Church and world.

## Postgraduate Programmes



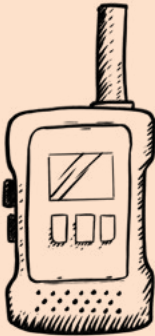
### **MA Applied Theology**

**Page 34**

PG Certificate, Applied Theology

PG Diploma, Applied Theology

Deepen your theological thinking and enrich your practice with our postgraduate programmes.



### **MA Language, Community and Development**

**Page 36**

PG Certificate, Language, Community and Development

PG Diploma, Language, Community and Development

Gain essential tools in community-based development, linguistics, literacy and Scripture engagement.



# Foundation Year

*Gain direct access to our BA Programmes*

If you've been out of education for some time, or do not have the necessary qualifications for standard entry, this is the option for you. We ground you in biblical and theological studies, develop your ministry capabilities, and equip you with the study skills vital to academic success.

All of your studies are underpinned by a commitment to your growth in Christ and character formation.

You will spend three days a week during term time at the Christchurch campus, with around a day and a half a week involved in your placement church or Christian organisation.

As a Moorlands student, you play a full and vital part in the college community – with the opportunity to use on-site accommodation, attend our chapel services, share meals with other students, and be part of a discipleship group.

The Foundation Year is designed to effectively prepare you for entry onto either the **BA (Hons) Applied Theology** or **BA (Hons) Applied Theology (Youth and Community Work)** with JNC professional recognition. While the Foundation Year is campus based, you can go on to study flexibly, at Moorlands South West, or stay at Christchurch campus for the BA programme.

## Programme duration

1 year full-time  
(as the first year of a 4-year degree programme)

## Location and mode of study

- Moorlands Christchurch Campus
- Location of placement

## Progression

Students who successfully complete the studies will be able to progress on to a Moorlands College BA programme validated by the University of Gloucestershire.



[LEARN MORE ABOUT  
FOUNDATION YEAR](#)



*"We work hard to provide a gentle entryway into theological studies and before you know it, you'll be flying into a degree programme with a great head start!"*

*Tim Miller,  
Foundation Year Leader*

### Modules:

- Biblical Studies
- Theological Studies
- Personal and Spiritual Development
- Ministry
- Placement and Portfolio

Study skills are embedded in every module to support your learning and help you develop academically.



# BA (Hons) Applied Theology

*Be equipped to serve God with integrity and confidence in a range of different settings*

Whether you are called to the local church, education, business, politics, the arts, the charity sector, or other vocational spheres, the Applied Theology programme will help you to develop a biblical and theological grounding for your work.

One of the programme's main aims is to help you integrate your academic studies with your practical ministry. This is facilitated largely through your weekly placement which provides you with the opportunity to reflect deeply and critically on your practice,

helping you to gain wisdom and ability both during and beyond your time at the College.

For example, you might deliver children's talks, lead worship in a variety of contexts, develop social media presence, lead youth events, preach at a church, run evangelistic events, reach out to international students, work behind the scenes at a church service, or help at a local Foodbank.

## **Programme duration**

- 3 years full-time
- Part time option available

## **Location and mode of study**

- Moorlands Campus Based
- Moorlands South West
- Flexible Learning
- Location of placements

## **Awarding body**

Students who successfully complete the programme will receive a degree from the University of Gloucestershire.





**LEARN MORE ABOUT  
BA (HONS) APPLIED THEOLOGY**

*“Since starting at Moorlands College, I have been stretched mentally, spiritually and physically. Adjusting from being a full-time Mum for the last 23 years, to studying for a degree, has been a tough but worthwhile transition. I am learning to balance my study, family life and placement whilst not losing the intimacy of relationship with God.”*

*Rhonda*

### **Modules:**

- Biblical Studies
- Christian Foundations
- Missional Contexts
- The Christian Leader

If you study full time, you'll study four modules each year. As part of your studies, you'll be required to undertake a practical placement for the duration of the programme.



# BA (Hons) Applied Theology Youth and Community Work

*Become a professional youth worker, without compromising your faith*

“Generation snowflake” or “violent hoodie”. Young people are all too often scapegoated, for everything from riots and broken windows to mental health epidemics and living life through their phones. But what do you see? Can you see the potential in the lives of young people, and want to see it realised?

Our world needs Christian youth workers more than ever. You will learn how to put

together theologically solid, contextually sensitive and relationally rich scaffolding to enable young people to grow and thrive.

Our programme is designed to graduate professional youth workers who love God and love others without compromise, equipping you to serve effectively, making a difference in the lives of those you work amongst.

## Programme duration

- 3 years full-time
- Part time option available

## Location and mode of study

- Moorlands Campus Based
- Moorlands South West
- Flexible Learning
- Location(s) of placement(s)

## Awarding body

Students who successfully complete the programme will receive a degree from the University of Gloucestershire, and a JNC Professional Qualification in Youth and Community Work endorsed by the National Youth Agency.





*“Youth work is hard, it’s humbling, and it’s challenging, but it is by far the greatest joy in my life. The young people I’ve had the privilege of working with, walking alongside, and praying for, have taught me more about this messy thing called life than any adult could. Young people are incredible, powerful, courageous, and they are resilient. They have the ability to change the world if we let them. I love that I get to witness bits of that through what I do.”*

*Rachel*



**LEARN MORE ABOUT BA (HONS) APPLIED  
THEOLOGY (YOUTH AND COMMUNITY WORK)**

## Professional development

One of the main aims of the Youth and Community Work programme is to help you integrate your academic studies with your work amongst young people and their community.

In achieving the professional qualification, you will demonstrate the full range of JNC competencies, including building professional, transformative relationships, safeguarding the health and welfare of young people, working with relevant agencies, and managing activities and colleagues. You will be recognised as a professional grade youth worker wherever you go!

### Modules:

- Biblical Studies
- Christian Foundations
- Young People, Communities and Contexts
- The Christian Youth and Community Worker

If you study full time, you'll study one module each year. As part of your studies, you'll be required to undertake a practical placement for the duration of the programme.







# MA Applied Theology

*Deepen your theological thinking and enrich your practice*

Root your practice in a deeper understanding of Scripture. Develop insight into your own context as you study alongside others. Wrap study around your busy personal, vocational and professional life.

The MA in Applied Theology requires the completion of 180 credits:

**Year 1: 60 Credits (PG Cert)  
2-day residentials, four times a year (plus an extra day for induction)**

You'll be introduced to the concepts of applied and practical theology, exploring the significance and implications of establishing solid theological foundations as a basis for

your practice. In the second module, you'll then study your chosen specialism in greater detail.

**Year 2: 60 Credits (PG Dip)  
2-day residentials, four times a year**

The year begins with the critical area of ethics as it relates to ministry and professional practice. You then have a further opportunity to develop your studies in your chosen specialism. The fifth and final taught module examines current developments and trends in the twin contexts of Christian practice: the Church and the contemporary world.

## Programme duration

2 years taught (part-time) plus 1 year for dissertation, with a possibility of gaining an extension into a second year.

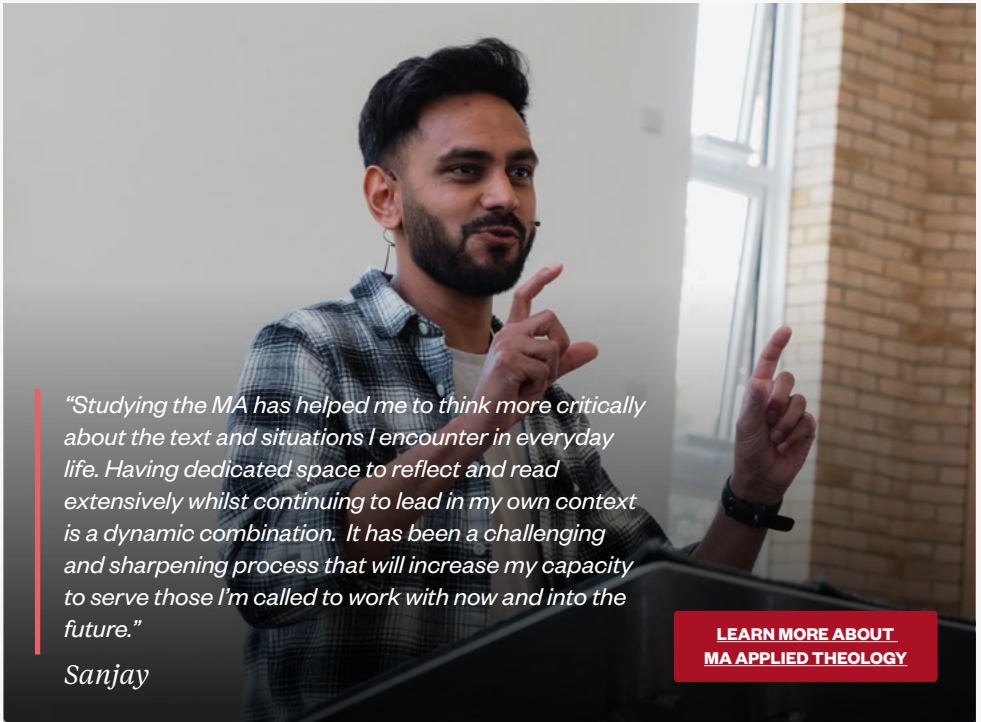
## Location and mode of study

Moorlands Christchurch Campus

## Awarding body

Students who successfully complete the programme will receive a Master's degree from the University of Gloucestershire.





*“Studying the MA has helped me to think more critically about the text and situations I encounter in everyday life. Having dedicated space to reflect and read extensively whilst continuing to lead in my own context is a dynamic combination. It has been a challenging and sharpening process that will increase my capacity to serve those I’m called to work with now and into the future.”*

*Sanjay*

**LEARN MORE ABOUT  
MA APPLIED THEOLOGY**

### **Year 3: 60 Credits (MA)**

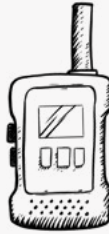
#### **Dissertation (no scheduled teaching)**

You will embark on an 18,000 word dissertation, involving researching and writing on an applied topic of your choice. It offers the option of expanding on your specialised area of study. You’ll be individually allocated a supervisor, appropriate to your field of research, who provides you with ongoing support and guidance throughout the process of research and writing.

#### **The Three Specialisms:**

- Developing Christian Leadership
- Apologetics and Communication
- The Bible and Preaching





# MA Language, Community and Development

*Be equipped to serve communities across the world*

Our MA in Language, Community and Development is part of our School of Language and Scripture, which is run in partnership with Wycliffe Bible Translators, UK.

The PG Cert, PG Dip and MA are unique in their delivery and **the training is mapped against the SIL International Standard Learning Objectives** meaning that you are equipped to be ready for the field. The programmes provide essential tools in community-based language development, including linguistics, literacy and education, Scripture engagement and translation and will equip you for service amongst communities across the world.

## This MA has three stages:

- Postgraduate Certificate: September to February
- Postgraduate Diploma: February to July
- Dissertation

In order to get the most from the programme, many people initially register for the Postgraduate Certificate then work in a professional internship, exploring language and development issues within a specific community and culture, before returning to reflect on your experiences on the PG Dip and through the dissertation for the full MA. However, for example, if you have already had substantial experience working in a cross-cultural context, you can choose to register for the full MA.

### Programme duration

MA LCD: 2 years full time.  
PGDip LCD: 1 year full time.  
PGCert LCD: 6 months full time.

### Location and mode of study

Moorlands Christchurch Campus

### Awarding body

Students who successfully complete the programme will receive their award from the University of Gloucestershire.



UNIVERSITY OF  
GLOUCESTERSHIRE



[LEARN MORE ABOUT MA  
LANGUAGE, COMMUNITY  
AND DEVELOPMENT](#)

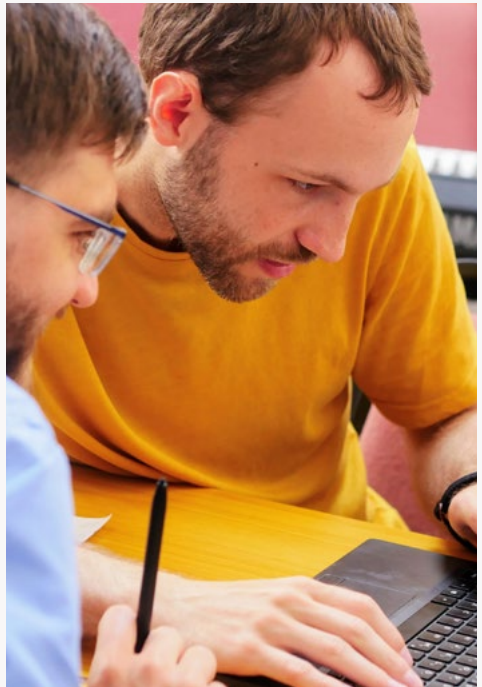
In partnership with:

**Wycliffe  
Bible  
Translators**



*“The Language, Community and Development course has caused me to rethink many of the things I took for granted in terms of culture and language when it come to reading the Bible, implementing its usage and seeing people transformed.”*

*Gaet*





**“Studying at Moorlands proved to be great preparation for my future as it taught me to be able to juggle studying Scripture whilst holding deep, and at times complex, truths in tension.”**

Zeke Rink  
Senior leader, Dreaming The Impossible





## Looking to study in the UK?

We welcome students from around the world. Programmes of study that are full-time, based at our Christchurch Campus, and leading to a qualification of degree-level or above, can be accessed via the Student Visa route.

### Student Visa Sponsorship

We offer Student Visa sponsorship for some of our campus-based BA and MA programmes. Be equipped at our Christchurch campus to impact the Church and world.

Perfect for those looking to study full-time in the UK.

[LEARN MORE TODAY](#)

### Possible courses:

- BA Applied Theology
- BA Applied Theology (Youth and Community Work)
- Postgraduate Diploma Language, Community and Development
- MA Language, Community and Development

# Entry Requirements

To be accepted onto a programme, you need to have the potential to succeed in it and for it to be of benefit to you. This is normally demonstrated by the details below.

Across all our programmes, we expect you to have an appropriate understanding of,

commitment to, and suitability for the range of vocations for which these studies prepare you, as well as a commitment to Christian life and service – not only to gain qualifications, but to continue to strive to go deeper in your walk with God.

## Foundation

**Five GCSE's** (including English, see below) at grade C/4 or above, or equivalent qualifications at level 2.

**GCSE in English** (Language or Literature) at grade C/4 or above, or equivalent qualifications at level 2, or an IELTS Academic Certificate with an overall score of 6.0 with at least 6.0 in each of reading and writing or nationally-recognised English language-based level 3 award, equivalent to these IELTS scores, from a different testing system.

## MA Applied Theology

**A degree in theology** or similar subject or equivalent.

You will normally have at least two relevant years of experience, and you will be engaged in practice while you undertake the programme.

**Sufficient academic ability:** you are normally expected to have a British degree in a theological field.

**GCSE in English** (Language or Literature) at grade C or above, or equivalent qualifications at level 2, including an IELTS Academic Certificate with an overall score of 6.5 with at least 6.0 in each of reading and writing or nationally-recognised English

## Undergraduate BA Programmes

**Two A-levels** or other equivalent level 3 qualifications.

GCSE in English (Language or Literature) at grade C/4 or above, or equivalent qualifications at level 2, or an IELTS Academic Certificate with an overall score of 6.0 with at least 6.0 in each of reading and writing or nationally-recognised English language-based level 3 award, equivalent to these IELTS scores, from a different testing system.

## MA Language, Community and Development

**An Honours degree at 2:2 or above.** If your highest level of formal education was taken outside the UK, please see The University of Gloucestershire's website for detailed information about entry requirements for international students.

**GCSE in English** (Language or Literature) at grade C/4 or above, or equivalent, or an IELTS Academic Certificate with an overall score of 6.0 with at least 6.0 in each of reading and writing, or equivalent from a different testing system.

You may feel that you don't quite meet the requirements above, but have sufficient understanding, experience, and non-certificated learning to succeed. If this is you, please talk to us about your situation.

# Fees and Finance

## Student loans

Tuition Fee Loans are available from Student Finance for our part-time and full-time BA (Hons) degree programmes, including the Foundation Year if taken as the first year of a four-year degree.

The tuition loan is paid directly to us. Maintenance loans from Student Finance are available, and they are paid directly to you. You pay them both back in due course to Student Finance.

Postgraduate Loans are now available from Student Finance to help MA students with programme fees and living costs.

For more information, visit [gov.uk/student-finance](https://www.gov.uk/student-finance) or email [finance@moorlands.ac.uk](mailto:finance@moorlands.ac.uk)

[LEARN MORE  
ABOUT FINANCE  
AT MOORLANDS](#)

[FIND OUT IF I AM  
ELIGIBLE FOR  
STUDENT FINANCE](#)

## Programme fees

Current tuition fees and related costs for all Moorlands College programmes, locations and modes of study are available on our website at [moorlands.ac.uk](https://www.moorlands.ac.uk)

## Campus accommodation

Once registered as a campus-based student, you may apply to be allocated an on-site bedroom. These rooms are limited in number so make sure you apply early to avoid disappointment. If you do not wish to live on campus we may be able to help you find alternative accommodation.

If you would like more information about campus accommodation, or help finding local accommodation, please email our Admissions department:

[admissions@moorlands.ac.uk](mailto:admissions@moorlands.ac.uk)

## Facilities

Facilities at the Christchurch Campus are available for students to use during their study with us.

For more information email: [facilities@moorlands.ac.uk](mailto:facilities@moorlands.ac.uk)

**“I finished with a degree classification I never believed I could, and a large part of that is due to the incredible support I was given to reach my full potential.”**

Rachel

BA (Hons) Applied Theology (Youth and Community Work)





## Ready to take the next step?

### **Book an Open Day**

Hear from lecturers, speak to current students, and explore the campus. Whether you're looking to stay on-site, or learn remotely via Flexible Learning, you can explore whether Moorlands is right for you at our next open day

### **Apply today**

Start your application today for free. Complete the online form at your own pace.

[APPLY TODAY](#)

### **Still not sure?**

Arrange a call with our friendly College Ambassador - we'd love to talk about which course could be for you, answer any questions about fees and finance, and talk through how our programmes could equip you for the calling that God has placed on your heart.

[BOOK A CALL WITH OUR COLLEGE AMBASSADOR](#)



**Copyright © 2024**

Moorlands College  
All Rights Reserved

Design and editorial by: Communications Department,  
Moorlands College.

Photographs used with permission from  
Charles Thorne, Sarah Rushby, Phil King,  
Sam Clement, Rachel Price, Megan Anscombe,  
Jethro Wilson and Lydia Clark.

**Moorlands College**

Christchurch Campus  
Sopley, Christchurch  
Dorset, BH23 7AT  
United Kingdom

☎ +44 (0)1425 674500

✉ [enquiries@moorlands.ac.uk](mailto:enquiries@moorlands.ac.uk)

🌐 [moorlands.ac.uk](http://moorlands.ac.uk)

Company number 4241702  
Registered charity 1092000

**Disclaimer**


The information in this prospectus is intended as a general guide to the programmes and facilities offered by Moorlands College. All information is believed to be correct at time of publication (June 2024) and may be subject to change without prior notice.



UNIVERSITY OF  
GLOUCESTERSHIRE



# Be equipped at Moorlands College. Impact the Church and world.

 @MoorlandsTheology

 /MoorlandsCollege

 @MoorlandsColl

 @MoorlandsTeam

**APPLY TODAY ONLINE**

**Christian theology applied.**